



Naval Facilities Engineering Command, Pacific  
 258 Makalapa Drive  
 Suite 100  
 Pearl Harbor, HI 96860-3134

## MILITARY RELOCATION TO GUAM AND CNMI PROGRAMMATIC AGREEMENT (PA) MEMO #1

<b>Project:</b> J-200-II AAFB North Ramp Utilities II – Communications Line	<b>Date:</b> November 17, 2020 <b>Comment Period Open Until:</b> January 1, 2021
<b>Project Location:</b> Andersen Air Force Base, Guam	<b>Prepared By:</b> NAVFAC Pacific

### PROJECT SUMMARY:

This project proposes to conduct design studies and subsequently construct telecommunications infrastructure consisting of an underground distribution of communications fiber optic cabling in concrete encased duct banks and manholes at Andersen Air Force Base (AAFB), Guam.

Project design efforts include geotechnical surveys, full soils/sediments and foundation investigations, grading and grubbing, landscaping for surface restoration, and possible munitions of explosive concern (MEC) removal. These tasks may require geotechnical borings of varying depths, mechanized excavation, placement of survey markers, and other ground disturbing activities. Subsurface excavation will be conducted for the installation of the telecommunication line, ducts, and associated manholes. Site preparation consists of clearing and grubbing, temporary erosion and sediment control, and preparation for construction.

This project was identified after the preparation of the 2015 Final Supplemental Environmental Impact Statement for the military relocation to Guam and the Commonwealth of the Northern Mariana Islands (CNMI) and Appendix E under various projects of the 2011 *Programmatic Agreement (PA) among the Department of Defense, the Advisory Council on Historic Preservation, the Guam State Historic Preservation Officer, and the Commonwealth of the Northern Mariana Islands State Historic Preservation Officer Regarding the Relocation to the Islands of Guam and Tinian*. In accordance with Stipulation I.E. of the PA, it is a new project associated with the Guam and CNMI Military Relocation (the Undertaking). This memorandum presents information to allow the public to provide comments on the identification and evaluation of historic properties and the determination of effect.

### PROJECT LOCATION:

The J-200-2 project is located at Andersen Air Force Base, Guam. The base occupies a mostly flat, uplifted limestone plateau in the northern portion of the island of Guam. The majority of the interior of the island is comprised of Mariana Limestone.

The total area of potential effect (APE) for J-200-2 has decreased from 36.9 hectares to 35.9

**1** This PA Memo is required by Stipulation IV.E.2.a. of the PA as a means for interested members of the public to provide comments on the identification and evaluation of historic properties. Stipulation IV.E.1.b. of the PA requires the DoD to take into account comments received within 45 days of the date of the delivery of this PA memo to the SHPO and public notification via the CRI website.

hectares (88.8 acres) (Figure 1) due to rerouting of the communications utilities.

## **IDENTIFICATION OF HISTORIC PROPERTIES:**

### **Identification Efforts**

In planning for the Undertaking, the Department of Defense (DoD) first conducted a data gap analysis to determine the need for supplemental identification and evaluation surveys and then conducted those surveys. Alignment of the communication lines were coordinated with Mr. Richard Olmo, AAFB Cultural Resource Manager to have least impact to cultural resources.

In consultation with the Guam SHPO, Advisory Council on Historic Preservation (ACHP), National Park Service (NPS) and Concurring Parties to the 2011 Programmatic Agreement (2011 PA), the DoD has applied the results of those identification efforts to the siting/lay down of individual projects to avoid and minimize effects to historic properties to the extent practical. DoD has provided documentation of these efforts to the Signatories and Invited Signatories via Appendices D and E of the 2011 PA.

DoD surveys and evaluations have focused on project-specific APEs, defined consistent with 36 CFR §800.16(d) to include those portions of the island of Guam subject to direct and indirect effects of projects included in the Undertaking. Both architectural and archaeological assessments have been completed.

More specifically, the J-200-2 APE has been subject to one or more of the historic property identification efforts listed in 36 CFR §800.4(b)(1), which may include background research, consultation, oral history interviews, sample field investigation and field survey. As such, results of identification and evaluation efforts in the vicinity of, and including the J-200-2 APE can be found in the following original studies of cultural and/or historic resources (also, see Figure 2 Page 1, Figure 2 Page 2, and Figure 2 Page 3):

Aaron, D., D. Hart, and S. Baker.

2007 *Historic American Engineering Record for Northwest Field, HAER No. GU-05*. Prepared by Engineering-Environmental Management, Inc.

Athens, J.S.

2009 *Final Archaeological Surveys and Cultural Resources Studies on Guam and the Commonwealth of the Northern Mariana Islands in Support of the Joint Guam Build-Up Environmental Impact Statement Volume I: Guam*. Prepared for Department of the Navy, Naval Facilities Engineering Command, Pacific, Pearl Harbor, Hawaii. International Archaeological Research Institute, Inc. Honolulu, Hawaii.

Church, M., J. Hokanson, J. Gallison, and M. Jennings

2009 *Cultural Resources Survey of 297 Acres at Andersen Air Force Base, Guam*. Prepared for Environmental Flight, Andersen Air Force Base, Guam. e2M Engineering

**2** This PA Memo is required by Stipulation IV.E.2.a. of the PA as a means for interested members of the public to provide comments on the identification and evaluation of historic properties. Stipulation IV.E.1.b. of the PA requires the DoD to take into account comments received within 45 days of the date of the delivery of this PA memo to the SHPO and public notification via the CRI website.

Environmental Management, Inc., Englewood, Colorado.

Davis, R.

1983 *Andersen Air Force Base Central Reconnaissance Survey*. Government of Guam Department of Parks and Recreation. MS on file at Andersen AFB, 36CVS/CVN, Guam.

DeFant, D. and R. Leon Guerrero

2006 *Archaeological Survey of Seven Parcels within the Munitions Storage Area, Andersen Air Force Base, Island of Guam*. Prepared for Department of the Navy, Pacific Division, Naval Facilities Engineering Command, Pearl Harbor, Hawaii. Paul H. Rosendahl, Ph.D., Inc., Guam.

Dixon, B. and S. Walker

2011 *Cultural Resource Investigations Conducted in the Territory of Guam Supporting the Joint Guam Build-Up Environmental Impact Statement: Final Archaeological Surveys on Guam 2009 at Proposed Utility Sites, Harmon Property, and Andersen AFB*. Prepared for Naval Facilities Engineering Command, Pacific Division, Pearl Harbor, Hawaii. Cardno TEC Inc., Honolulu.

Dixon, B., S. Walker, and M. Carson

2011 *Cultural Resource Investigations Conducted in the Territory of Guam Supporting the Joint Guam Build-Up Environmental Impact Statement: Final Archaeological Surveys on Guam 2008-2009 at Air Force Barrigada, Proposed Live Fire Training Range, Andersen South, and Naval Base Guam*. Prepared for Naval Facilities Engineering Command, Pacific Division, Pearl Harbor, Hawaii. Cardno TEC Inc., Honolulu.

Dixon, B., T. Rudolph, A. Jalandoni, I. Nelson, M. Hroncich-Conner, S. Leary, R. Schaefer, E. Lash, M. Todd

2014a *Proposed Guam and CNMI Military Relocation 2012 Roadmap Adjustments SEIS Live-Fire Training Range Complex Footprint, Main Cantonment, Utilities, Communications, Well field Alternative and Access Route Options: Potential Direct Impact Area In-Fill Cultural Resource Study*. Prepared for Naval Facilities Engineering Command, Pacific Division, Pearl Harbor, Hawaii. Cardno TEC, Inc., Honolulu.

2014b *Proposed Guam and CNMI Military Relocation 2012 Roadmap Adjustments SEIS Live-Fire Training Range Complex Surface Danger Zone (SDZ) Alternatives: Potential Indirect Impact Area In-Fill Cultural Resource Study*. Prepared for Naval Facilities Engineering Command, Pacific Division, Pearl Harbor, Hawaii. Cardno TEC, Inc., Honolulu.

**3** This PA Memo is required by Stipulation IV.E.2.a. of the PA as a means for interested members of the public to provide comments on the identification and evaluation of historic properties. Stipulation IV.E.1.b. of the PA requires the DoD to take into account comments received within 45 days of the date of the delivery of this PA memo to the SHPO and public notification via the CRI website.

Dixon B.

2015 *Andersen Air Force Base, Guam National Historic Preservation Act Section 110 Cultural Resources Identification and Evaluation Studies, 2015*. Prepared for Naval Facilities Engineering Command, Pacific Division, Pearl Harbor, Hawaii. Cardno TEC, Inc., Honolulu.

Grant, M., M. Travisano, S. Wenzlau, and M. Durst

2007 *Results of Cultural Resources Inventories for Establishment and Operation of an Intelligence, Surveillance, Reconnaissance, and Strike Capability and the Development of Red Horse Squadron, Andersen Air Force Base, Guam*. GeoMarine, In., Plano, Texas.

Haun, A.E.

1988 *Archaeological Reconnaissance Survey and Field Inspections of Relocatable Over-the-Horizon Radar Sites on Guam, Mariana Islands, Micronesia*. Prepared for Wilson Okamoto and Associates, Inc. Paul H. Rosendahl, Ph.D., Inc., Hilo, Hawaii.

1989 *Archaeological Reconnaissance Survey of Relocatable Over-The-Horizon Radar site P-223 Territory of Guam, Mariana Islands, Micronesia*. Prepared for Wilson Okamoto & Associates, Inc. Paul H. Rosendahl, Ph.D., Inc., Hilo, Hawaii.

Hlatky, N., and J. Maxwell

2018 *Draft Archaeological Survey and Subsurface Testing for Proposed Construction of P-290 Earth Covered Magazines and Ordnance Pads, Andersen Air Force Base, Guam*. Prepared for Department of the Navy, Pacific Division, Naval Facilities Engineering Command, Pearl Harbor, Hawaii. International Archaeology LCC, Honolulu.

Hokanson, J., D. Kilby, M. Church, and R. McCurdy

2007 (GIS data labeled 2008) *Cultural Resources Survey for a Perimeter Fence and Portions of the Munitions Storage Area, Andersen Air Force Base, Guam*. Engineering-Environmental Management, Inc., Denver, Colorado.

Hunter-Anderson, R. and D. Moore

2003 *Cultural Resources Snake Barrier Concept, Andersen Air Force Base, Guam*. Micronesian Archaeological Research Services, Mangilao, Guam.

Kurashina, H., T McGrath, and H. Manner

1986 *Archaeological Surveys of Areas 1, 2, 1-A, and 2-A at Northwest Field, Andersen Air Force Base and Naval Communication Area Master Station Western Pacific, Finegayan, Guam*,

4 This PA Memo is required by Stipulation IV.E.2.a. of the PA as a means for interested members of the public to provide comments on the identification and evaluation of historic properties. Stipulation IV.E.1.b. of the PA requires the DoD to take into account comments received within 45 days of the date of the delivery of this PA memo to the SHPO and public notification via the CRI website.

*Marianas Islands*. Prepared for Naval Facilities Engineering Command, Pacific, Pearl Harbor, Hawaii. Micronesian Area Research Center, University of Guam, Mangilao, Guam.

Liston, J.

1996 *The Legacy of Tarague Embayment and Its Inhabitants, Andersen AFB, Guam*. Prepared for 36 CES/CEV, Unit 14007, Environmental Flight, Andersen Air Force Base, Guam. International Archaeological Research Institute, Inc., Honolulu.

Mason Architects, Inc.

2004 *Historic Building and Associated Landscape/Viewsheds Inventory and Evaluation for Andersen Air Force Base, Guam, 2004 Update*. Prepared for Andersen Air Force Base, Guam. Mason Architects, Inc., Honolulu.

Mohlman, G.

2015 *(GIS data labeled 2013) Final Report Historic Inventory Survey Andersen Air Force Base, Territory of Guam*. Prepared for Naval Facilities Engineering Command Marianas by Southeastern Archaeological Research, Inc. (SEARCH), Tamuning, Guam.

Welch, D.

2010 *Archaeological Survey and Cultural Resource Studies Conducted in 2007 on the Island of Guam in Support of the Join Guam Build-Up Environmental Impact Statement*. 2 volumes. Prepared for Department of the Navy, Pacific Division, Naval Facilities Engineering Command, Pearl Harbor, Hawaii. International Archaeological Research Institute, Inc., Honolulu.

Yee et al 2004 Yee, S., D. Welch, and J. Allen

2004 *Archaeological Overview Survey Report for Andersen Air Force Base, Guam*. Prepared for 36 CES/CEVN, AAFB, Guam and Earth Tech, Inc., Honolulu. International Archaeological Research Institute, Inc. Honolulu.

Results of the above identification efforts indicate that there are many historic properties in the vicinity of the APE but only one historic property is located within the APE (Site 66-08-1065). Site 66-08-1065, the historic Northwest Airfield, is a World War II (WWII) airfield built between 1944 and 1945. It closed in 1949. Northwest Field is comprised of two parallel runways constructed in a southwest to northeast direction. There are no extant buildings or structures except for deteriorating runways, hardstands, and some road traces. Today, Northwest Field is used for troop and aircraft touch-and go exercises, and the Detachment 5, 22nd Space Operations Squadron facility, which is located on a small area on the former south aircraft parking area. Local weather, flora, and changes in military mission have, respectively, reclaimed and led to the dismantling of much of the former air base. The area is used for hunting feral pigs and deer.

---

5 This PA Memo is required by Stipulation IV.E.2.a. of the PA as a means for interested members of the public to provide comments on the identification and evaluation of historic properties. Stipulation IV.E.1.b. of the PA requires the DoD to take into account comments received within 45 days of the date of the delivery of this PA memo to the SHPO and public notification via the CRI website.

Previous cultural resources investigations at Northwest Field was completed, including Historic American Engineering Record (HAER) documentation, and mitigative work including a public interpretation booklet. Northwest Field is significant under criteria A at a national level for events during World War II that aided in the defeat of Japan and ended the war. The property's significance is tied to its dedicated use for night missions against the Japanese oil industry, for its having the only bombers especially equipped with the AN/APQ-7 "Eagle" radar, for the 315th Bomb Wing development of the "compressibility" procedure, and for its planes flying the last bombing mission against Japan. While Northwest Airfield is eligible for the National Register of Historic Places (NRHP) under Criterion A, additional work is not required since HAER and supplemental Archival documentation associated with the Live Fire Training Range Complex served to mitigate any adverse effects.

In accordance with Stipulation VI.F. of the PA, the DoD has retained a full-time Archaeologist to provide site checks, oversee coordination and execution of the archaeological mitigation measures in the PA and to provide quality control. This individual is on-staff at Marine Corps Activity Guam, Public Works Department, and is also designated to respond to and report any inadvertent discoveries to the Signatories, Invited Signatories, and Concurring Parties per Stipulation XII of the PA.

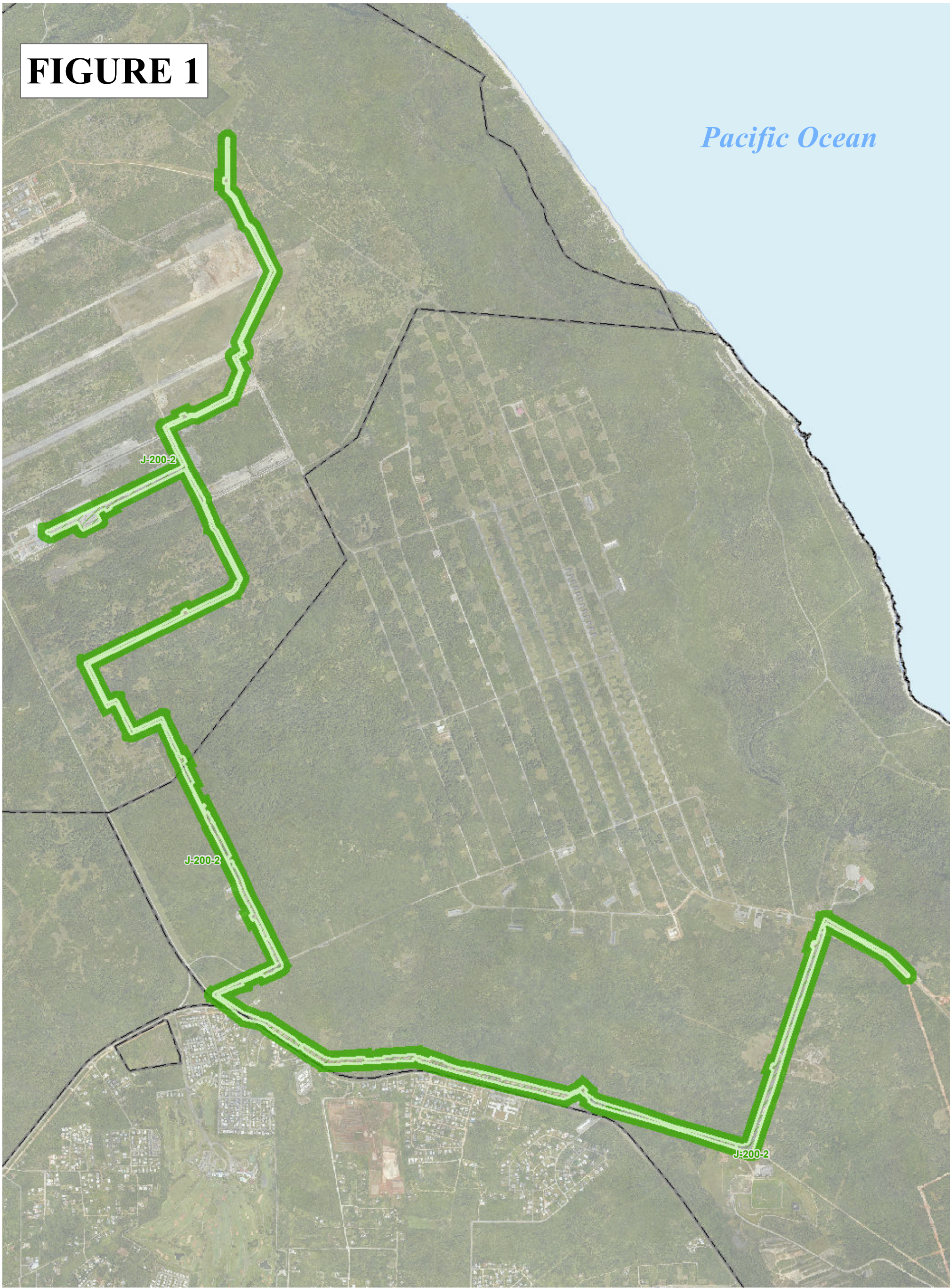
**DETERMINATION OF EFFECT:**

Considering the information presented above, the DoD has determined that this project will have no adverse effect to historic properties.

---

**6** This PA Memo is required by Stipulation IV.E.2.a. of the PA as a means for interested members of the public to provide comments on the identification and evaluation of historic properties. Stipulation IV.E.1.b. of the PA requires the DoD to take into account comments received within 45 days of the date of the delivery of this PA memo to the SHPO and public notification via the CRI website.

# FIGURE 1



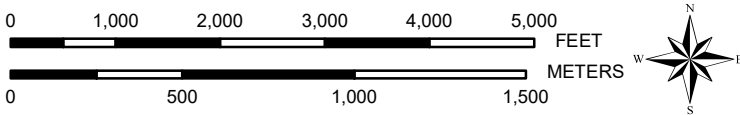
Pacific Ocean

J-200-2

J-200-2

J-200-2

### J-200-2 (Communications Utilities) at Andersen AFB - Construction Area



PREPARED BY:  
Naval Facilities Engineering Command Pacific Division  
Guam Program Management Office  
DATE: 04 Nov 2020

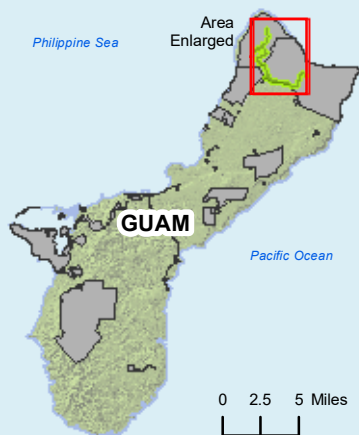


Coordinate System: UTM Zone 55 North  
Projection: Transverse Mercator  
Datum: D WGS 1984

### Legend

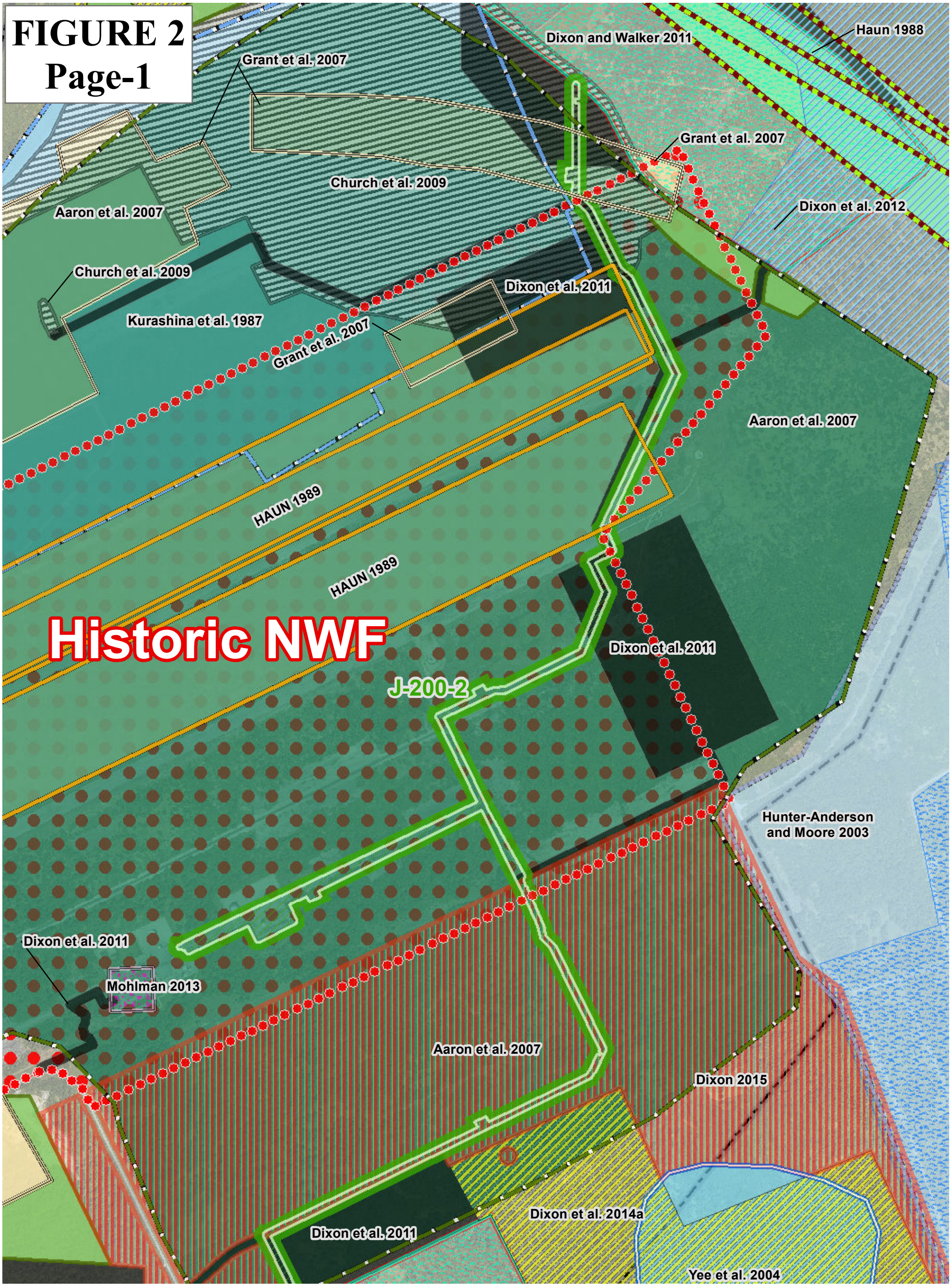
- J-200-2 (Communications Utilities) Project Area
- Military Installations

Total APE Area J-200-2 = 88.7 Acres



Date: 11/4/2020 Time: 3:00:57 PM Path: C:\Users\laaron.pulliam\OneDrive\OneDrive - United States Department of the Navy\Documents\GIS Projects\IMXD\AAFBEVIPA Memo\J200-2\PA MEMO\_AAFB\_J200-2\_Communications Utils\_Public - Figure 1.mxd

**FIGURE 2**  
**Page-1**



**Historic NWF**

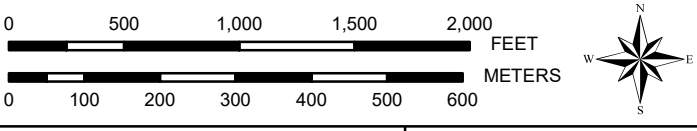
J-200-2

**J-200-2 (Communications Utilities) at Andersen AFB - Construction Area**

**Legend**

- J-200-2 (Communications Utilities) Project Area
- Military Installations
- Cultural Surveys**
- Dixon 2015
- Dixon et al. 2014a
- Dixon et al. 2014b
- Mohlman 2013
- Dixon et al. 2012
- Dixon and Walker 2011
- Dixon et al. 2011
- Church et al. 2009
- Aaron et al. 2007
- Grant et al. 2007
- Mason Architects 2004
- Yee et al. 2004
- Hunter-Anderson and Moore 2003
- Haun 1989
- Haun 1988
- Kurashina et al. 1987
- Historic NWF

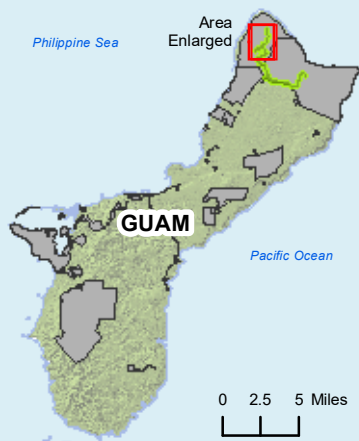
**Total APE Area J-200-2 = 88.7 Acres**



PREPARED BY:  
Naval Facilities Engineering Command Pacific Division  
Guam Program Management Office  
DATE: 04 Nov 2020



Coordinate System: UTM Zone 55 North  
Projection: Transverse Mercator  
Datum: D WGS 1984



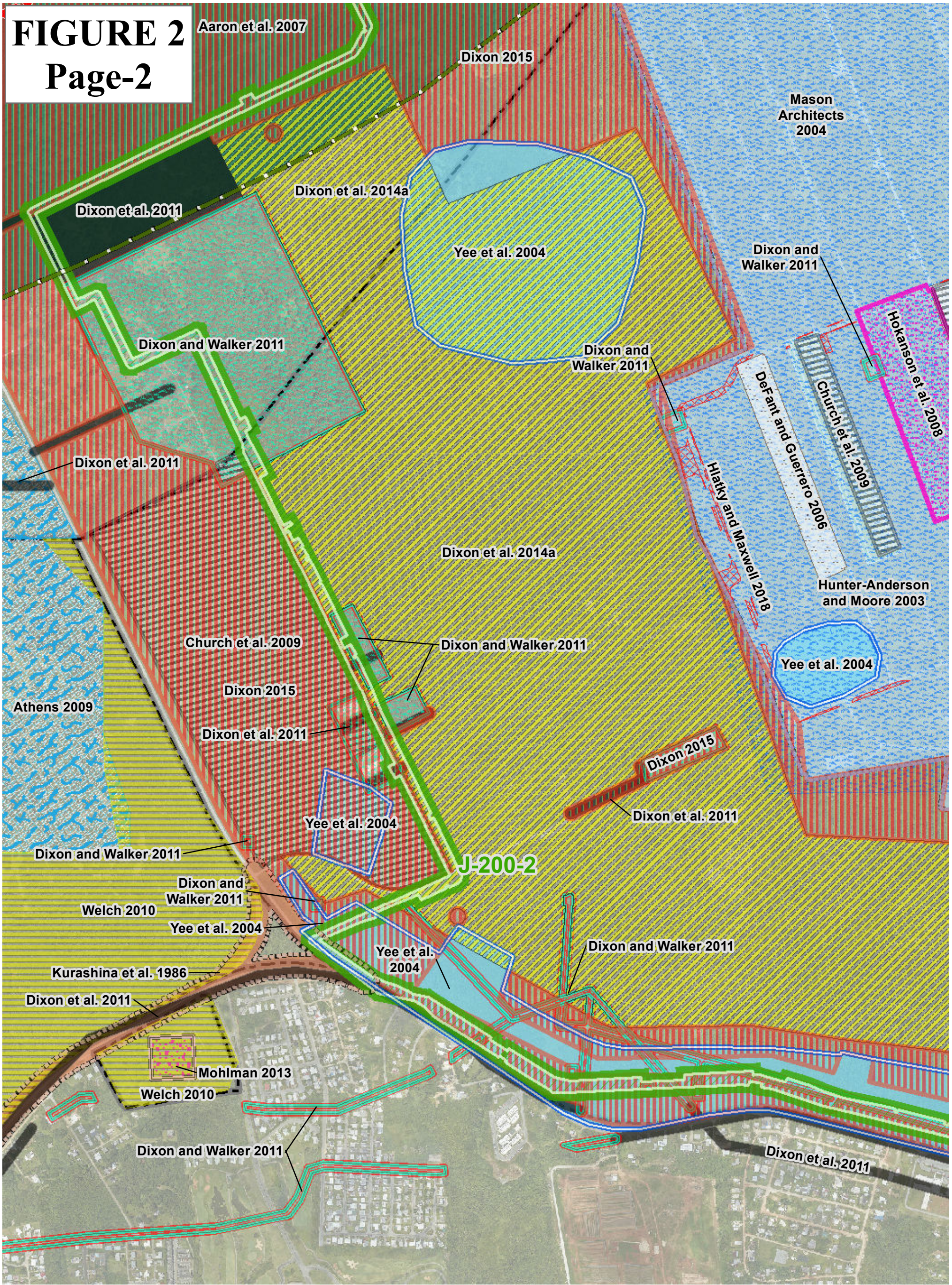
Date: 11/4/2020 Time: 3:24:27 PM Path: C:\Users\aaaron.pulliam\OneDrive\Documents\GIS Projects\IMXD\AAFBEVIPA Memo\J200-2\PA MEMO\_AAFB\_J200-2\Communications Utilities\_CulturalSurveys - Figure 2.mxd



# FIGURE 2

## Page-2

Aaron et al. 2007

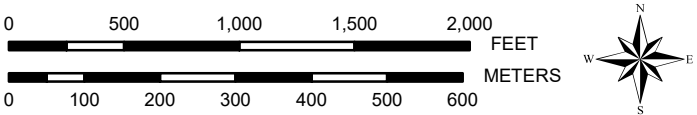


### J-200-2 (Communications Utilities) at Andersen AFB - Construction Area

#### Legend

- J-200-2 (Communications Utilities) Project Area
- Hlatky and Maxwell 2018
- Dixon 2015
- Dixon et al. 2014a
- Mohlman 2013
- Dixon and Walker 2011
- Dixon et al. 2011
- Welch 2010
- Athens 2009
- Military Installations
- Church et al. 2009
- Hokanson et al. 2008
- Aaron et al. 2007
- DeFant and Guerrero 2006
- Mason Architects 2004
- Yee et al. 2004
- Hunter-Anderson and Moore 2003
- Hunter-Anderson 2003
- Kurashina et al. 1986
- Historic NWF

Total APE Area J-200-2 = 88.7 Acres



PREPARED BY:  
Naval Facilities Engineering Command Pacific Division  
Guam Program Management Office  
DATE: 04 Nov 2020



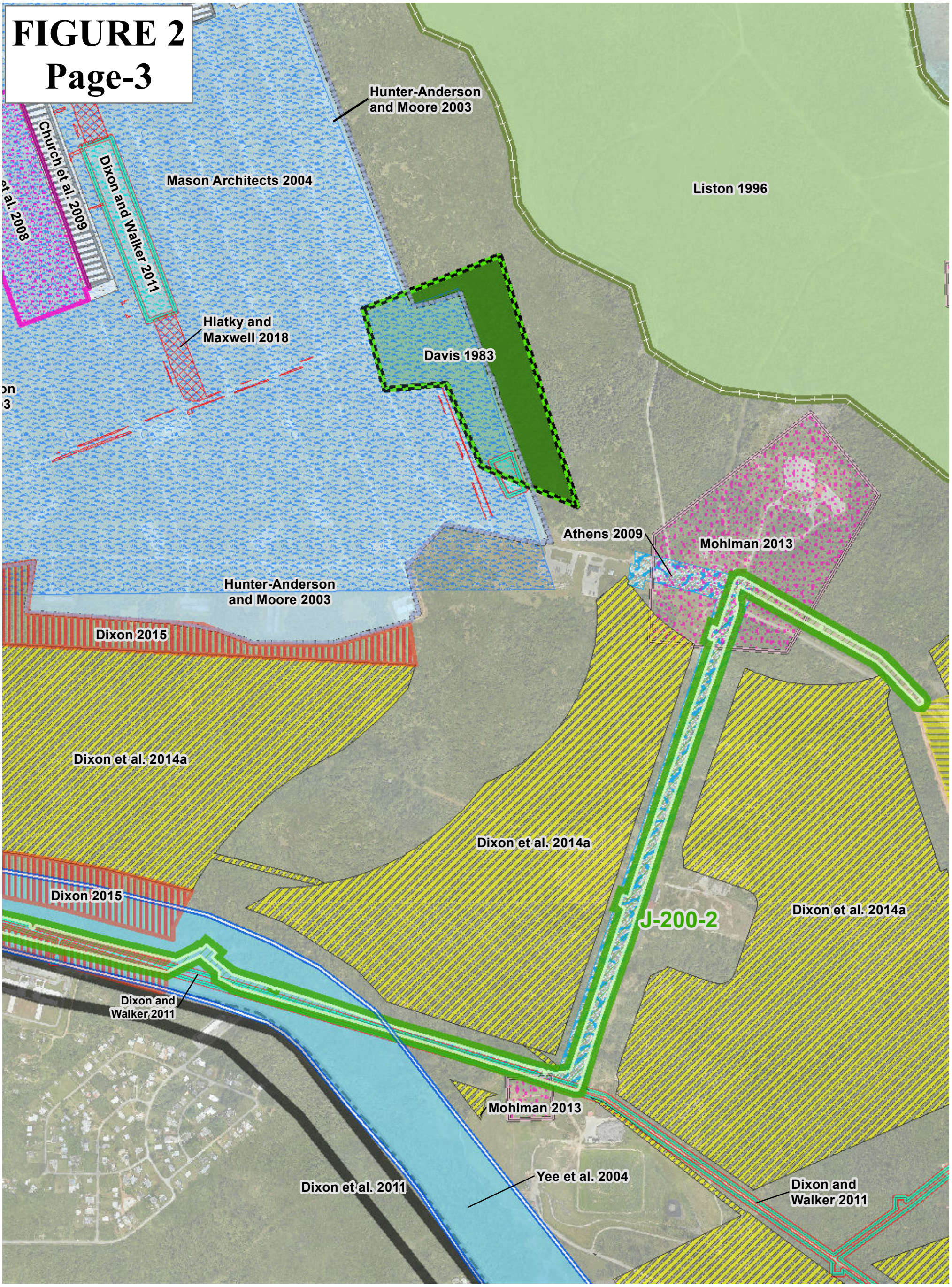
Coordinate System: UTM Zone 55 North  
Projection: Transverse Mercator  
Datum: D WGS 1984



Date: 11/4/2020 Time: 5:57:23 PM Path: C:\Users\aaaron.pulliam\OneDrive\OneDrive - United States Department of the Navy\Documents\GIS Projects\J200-2\J200-2\_2\Communications Utilities - Cultural Surveys - Figure 2.mxd

# FIGURE 2

## Page-3

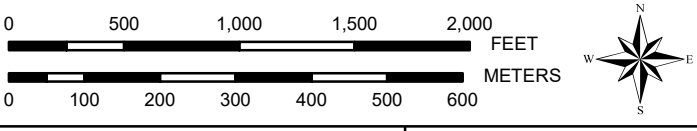


### J-200-2 (Communications Utilities) at Andersen AFB - Construction Area

#### Legend

- J-200-2 (Communications Utilities) Project Area
- Military Installations
- Cultural Surveys**
- Hlatky and Maxwell 2018
- Dixon 2015
- Dixon et al. 2014a
- Mohlman 2013
- Dixon and Walker 2011
- Dixon et al. 2011
- Welch 2010
- Athens 2009
- Church et al. 2009
- Hokanson et al. 2008
- DeFant and Guerrero 2006
- Mason Architects 2004
- Yee et al. 2004
- Hunter-Anderson and Moore 2003
- Liston 1996
- Davis 1983

Total APE Area J-200-2 = 88.7 Acres



PREPARED BY:  
Naval Facilities Engineering Command Pacific Division  
Guam Program Management Office  
DATE: 04 Nov 2020



Coordinate System: UTM Zone 55 North  
Projection: Transverse Mercator  
Datum: D WGS 1984



Date: 11/4/2020 Time: 6:08:51 PM Path: C:\Users\laaron.pulliam\OneDrive\Documents\GIS Projects\IMXD\AAFBEVIPA Memo\J200-2\PA MEMO\_AAFB\_J200-2\PA MEMO\_AAFB\_J200-2\Communications Utilities\_CulturalSurveys - Figure 2.mxd

# Military Relocation PA Memo Comment Form

2020

If submitting via **e-mail**, scan and send to: [criwebcomment@navy.mil](mailto:criwebcomment@navy.mil)

If submitting via **postal mail**, send to:

Attn: CRI Web Comments  
Code EV23, NAVFAC Pacific  
258 Makalapa Drive, Suite 100  
JBPHH, Hawaii 96860-3134

Submitted comments will be posted on the Navy's Cultural Resources Information (CRI) web site. Information presented on the CRI web site is considered public. The sections outlined in **red** are required to be completed in order for a comment to be posted.

## Privacy Act Statement

Personal information will only be used to contact you regarding the comments you submit. This information will only be shared with another government agency if your inquiry relates to that agency, or as otherwise required by law. We will not create individual profiles or give your information to any private organization. While you must provide a valid e-mail address or postal address, please **DO NOT** include personally identifying information such as a social security number.

By submitting this comment form, you agree not to include content that is offensive in nature, such as profanity, personal attacks on individuals, and racist or abusive language.

**PROJECT: I-200-II AAFB North Ramp Utilities II – Communications Line**

**SUBJECT: Revised PA Memo # 1, Defining the Area of Potential Effect, Navy's Efforts to Identify Historic Properties, and Navy's Determination of Effects**

**Date:** \_\_\_\_\_

**Name:** \_\_\_\_\_

**CRI User Name** (if you don't want your real name to be posted with your comment on the CRI web site):

\_\_\_\_\_

**E-Mail Address:** \_\_\_\_\_

**and/or**

**Postal Mail Address:** \_\_\_\_\_

**COMMENTS:** \_\_\_\_\_

\_\_\_\_\_

\_\_\_\_\_

\_\_\_\_\_

\_\_\_\_\_

\_\_\_\_\_

